

Customer Profile

Variable-length, cut-to-order machinery OEMs

The Challenge

In the typical application, the cutting blade is adjusted to a new measurement each time a cut is made. An ordinary measuring tape is used to determine the position of the blade. If the operator is not careful when aligning the blade, the cut will be inaccurate and the result becomes scrap.

The Solution

Linear MLFK, magnetic tape and panel meter

Product Features

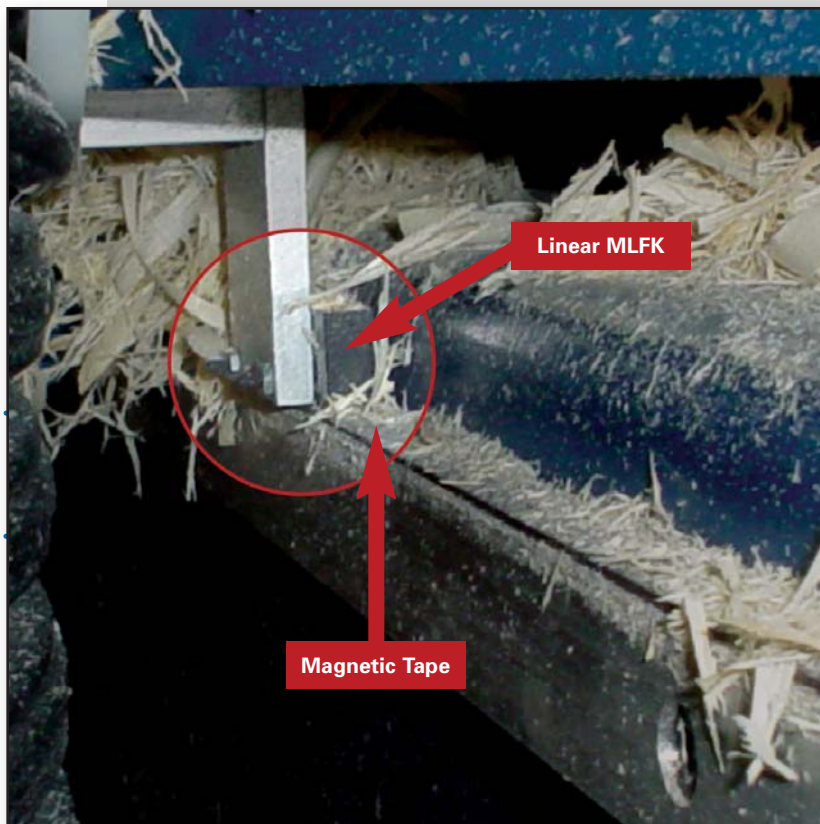
- Resolution up to 10 μ
- Non contact with up to 1mm airgap
- IP67 rated
- Fast response time
- Push-pull or RS 422 squarewave
- Complimentary output

Benefits to the Customer

- No moving parts
- Can be used in tough industrial environments
- Reduced false triggering from electrical noise using complimentary output
- High precision

Market Opportunities

- X-Y table manufacturers
- Linear motor manufacturers
- Data plotter manufacturers
- Wood and metal-cutting OEMs who rely upon manual and visual cutting adjustment
- Anyplace where linear position is desired (i.e. rail trolley and cart)



For application information, contact:

Baumer Electric Ltd.
122 Spring Street, Unit C-6
Southington, CT 06489

Phone: (860) 621-2121
Fax: (860) 628-6280
E-mail: sales.us@baumerelectric.com
www.baumerelectric.com/usa

Customer Service: (800) 937-9336
Technical Support: (860) 621-2121